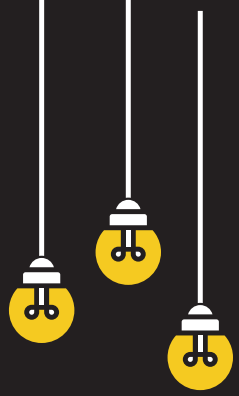


DESSERT MENU



DESSERTS

- | | |
|--|------------|
| BLUEBERRY BREAD PUDDING | 6.5 |
| TRIPLE BERRY COULIS,
VANILLA BEAN ICE CREAM | |
| BROWNIE A LA MODE | 6 |
| CANDIED WALNUTS, CHOCOLATE SAUCE,
VANILLA BEAN ICE CREAM, CARAMEL | |
| CREME BRULEE | 6.5 |
| FRESH BERRIES | |
| NY STYLE CHEESECAKE | 7 |
| SEASONAL | |
| VANILLA BEAN ICE CREAM SUNDAE | 7.5 |
| STRAWBERRIES, CANDIED WALNUTS,
CHOCOLATE SAUCE, CARAMEL SAUCE | |



COFFEES

- | | |
|------------------------------|----------|
| COFFEE | 2 |
| COFFEE & BAILEYS | 5 |
| COFFEE & AMARETTO | 5 |



DESSERT MENU

